

# OCTOBER NEWS LETTER

## 2024 CONSTITUTION & BYLAWS

The Constitution & Bylaws are currently being updated with the passed amendments from Supreme Session. They will be published on the website as soon as possible and a notice will go out to all jurisdictions & Bethels.



## 2024-25 SGC DIRECTORY

The 2024-25 SGC Directory is now available. Please contact the Supreme Office ([office@jdint.org](mailto:office@jdint.org)) for access if you haven't received the Dropbox link.

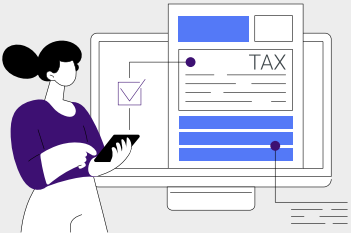
It is still a work in progress, so you will notice that there is still a lot of information missing. It will updated as information is received.



## IRS 990 FILING

Bethels and GGCs in the United States, don't forget to file your 990 or 990-EZ! Contact the Supreme Office ([office@jdint.org](mailto:office@jdint.org)) if you have any questions.

Don't forget to save a copy of your filing to send in with your Annual Report!



## JDI QUARTERLY TOWN HALL

The first Quarterly Town Hall this year will be held on November 13, 7:00 PM CST

Discussion topics will include:

- 501 (c) 3 tax laws
- Annual Reports
- Upcoming fundraisers
- Trademark



[Click here to register](#)



## PROMOTION 'BY THE NUMBERS'

ALL Bethels are invited to participate in the JDI Promotion 'by the numbers' program!

7 - 3 - 5

We all know the significance of these numbers to our organization. Let's use them to help regrow our beloved organization. Each number will represent a specific goal for promoting Job's Daughters International. **The program deadline is June 1, 2025.**

[CLICK HERE TO LEARN MORE](#)  
[OR SCAN THE QR CODE](#)



## SUPREME LIBRARIAN'S COMPETITION

Being a Librarian; whether it's a Supreme Bethel, Grand Bethel, Jurisdictional Bethel, or a Bethel Librarian...is a very important job! There is so much information to be shared and learned, that can be found through reading, writing, observing, and experiencing. The theme of this year is "Bee the Change", and I am challenging you to look for ways to be kind and make a difference in someone else's life each and every day!



There will be two submission date deadlines, and points will be combined for the two submissions. The first are for the dates October 1 – January 31 (due by February 15), and the second are for the dates February 1 – May 31 (due by June 15).



-Terri Brower, Supreme Librarian 24-25

[Click here to learn more](#)  
[or scan the QR code](#)

As the transition to the 24-25 SGC year was occurring, it was brought to our attention that the 23-24 Supreme Librarian had not awarded the winners of the various categories for the 23-24 SGC term. The new Supreme Librarian will be reviewing each of the entries that were submitted, responding to them, and awarding the certificates in each category. Please note that with 150+ entries, this will take a bit of time, but each one will receive a response by the beginning of November!

# Greetings from the Supreme Beekeeper



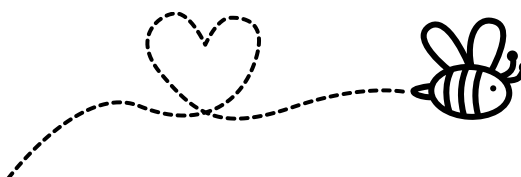
Hello! I am excited to be overseeing the most active buzzing group of Job's Daughters International, our Jobie-to-Bees. My Masonic journey started when I joined Bethel 12 Gettysburg in 1989. I have served my Bethel and Pennsylvania Job's Daughters in many different positions and have learned so much with each one. Outside of Job's Daughters I am a proud Eagle Scout and DeMolay Mom. I have always enjoyed planning educational and fun events for youth.

My goal this year is to meet as many Jobie-to-Bees and attend their Beehive meetings or events as possible. To understand what our Jobie-to-Bees are doing and to have an open discuss about what resources Bethel Beekeepers are in need of having, and what they find is successful in their growth of their hive, I am hosting two Zoom events for Bethel Beekeepers only in October. The first one will be **Thursday, October 17 at 8:00 pm EST** and the second one will be **Saturday, October 19 at 9:00 am EST**. Please register for either discussion by emailing me at [supremebeekeeper@jdint.org](mailto:supremebeekeeper@jdint.org).



Being involved with our Jobie to Bees is important to me. Please send me information to join your Beehive meeting or events via zoom or in person. A few weeks ago, I was able to attend a weekend camp with the DelMar Beehive. They made bee themed jewelry, slime with glitter, were creative with several craft projects, decorated cupcakes, and are working on a special gift to presented at a later time.

Melinda Culp, Supreme Beekeeper



# HOW TO TAKE PHOTOS FOR MARKETING & PROMOTION:

## JOB'S DAUGHTERS INTERNATIONAL

### 1. Show Leadership in Action:

- Capture members leading meetings, guiding peers, or giving presentations
- Highlight confidence and growth through active participation

### 2. Emphasize Service & Charity

- Photograph members engaging in community service or charitable work
- Show the impact of giving back, reflecting the value of service to others

### 3. Highlight Sisterhood & Friendship

- Take candid shots of members supporting or enjoying time together
- Showcase the sense of belonging and teamwork that's central to Job's Daughters

### 4. Capture Ritual & Tradition

- Include photos of members in regalia or during ceremonies
- Ensure formal moments are framed well to reflect the organization's heritage and values

### 5. Feature Fun & Personal Growth

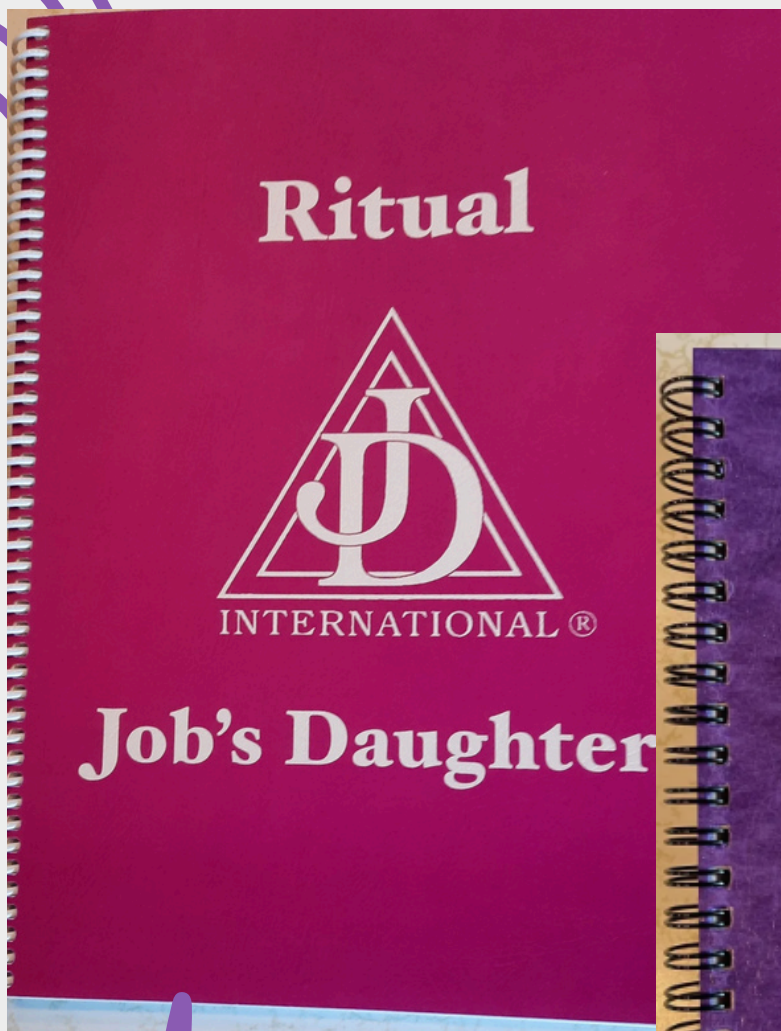
- Show members enjoying social events or casual activities
- Highlight how Job's Daughters helps friendships, confidence, and life skills

## PHOTO TIPS

- **Clear backgrounds** - Avoid having other people or distracting elements in the background. Keep the focus on the members and their activities.
- **Lighting** - Use natural light whenever possible and make sure the subject is well-lit to avoid shadows or overexposure.
- **Framing** - Center the action and avoid cluttered or distracting scenes. Ensure members are clearly visible and the focus is on them.
- **Genuine Moments** - Capture real interactions such as members talking, working together, or having fun - this reflects the values of leadership, service, and sisterhood.
- **No Over-Editing** - Enhance brightness and contrast if needed, but keep it natural. Avoid heavy filters that distract from the authenticity of the moment.



Please email photos if willing to be used for marketing and promotion purposes to [socialmedia@jdint.org](mailto:socialmedia@jdint.org)

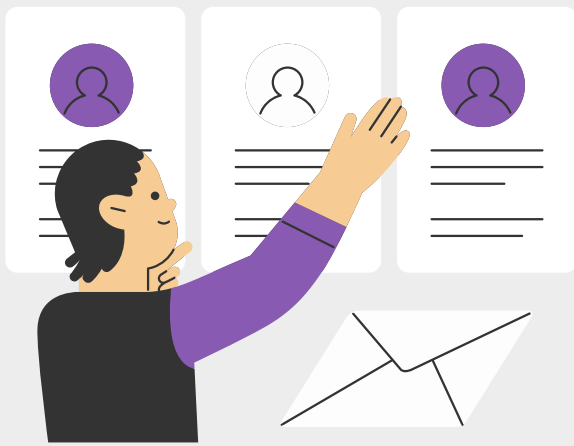


# Price Reduction!

Rituals \$5.00 each

Large Print Rituals \$13 each

With the upcoming publication of the new Ritual, we need your help moving the remaining inventory of Rituals and Large Print Rituals. The cost of the books has been reduced as noted above. To order, please contact your Grand Secretary for Bethels under a GGC or the Supreme Office for Bethels under Supreme.



# Help Wanted

The Board of Trustees is working to build teams to assist in various business and organizational processes.

## TRANSLATION TEAM

Are you fluent in Spanish and interested in joining the new Spanish translation team?

Send your resume/cv (curriculum vitae) to [office@jdint.org](mailto:office@jdint.org)



## MARKETING TEAM

Do you have experience with marketing and promotion?

Do you enjoy promoting JDI?

Consider joining the Marketing Team!

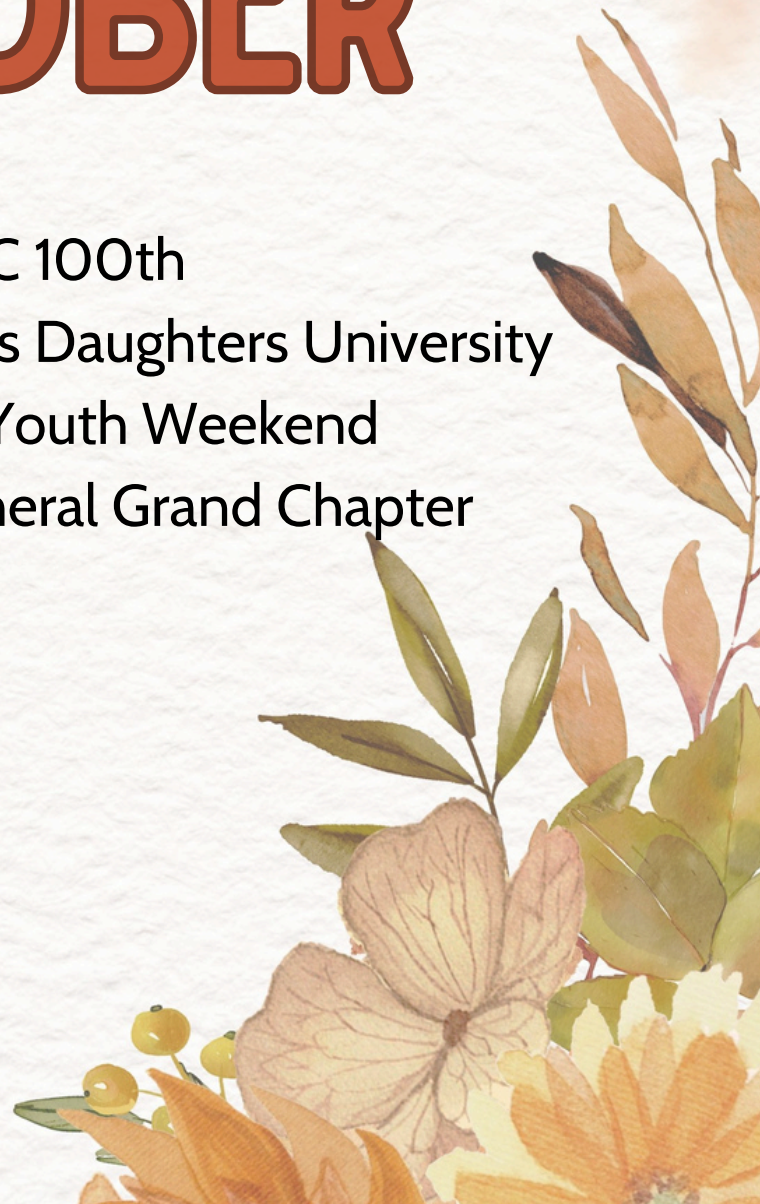
Send your resume/cv (curriculum vitae) to [office@jdint.org](mailto:office@jdint.org)



# SUPREME TRAVEL CALENDAR

# OCTOBER

5	Indianapolis, IN	GGC 100th
11-13	Boise, ID	Job's Daughters University
17-20	Billings, MT	Tri Youth Weekend
25-29	Myrtle Beach, SC	General Grand Chapter



# SUPPORT YOUR MISS INTERNATIONAL



## WHEN

**Thursday, October 10, 2024**

Place your order for pickup or delivery

## WHERE

**Available at Panda Express locations US nationwide**

[www.pandaexpress.com](http://www.pandaexpress.com)

## HOW

**Online orders only**

Apply code **926730** in the Fundraiser Code box during online checkout at [www.pandaexpress.com](http://www.pandaexpress.com) or via App



## EVERY BITE COUNTS!

28% of sales will be donated to:  
Miss International Jobs Daughter Fund  
supporting approved travel costs of the MIJD to  
promote, mentor and engage the JDI world.

# PANDA EXPRESS FUNDRAISER

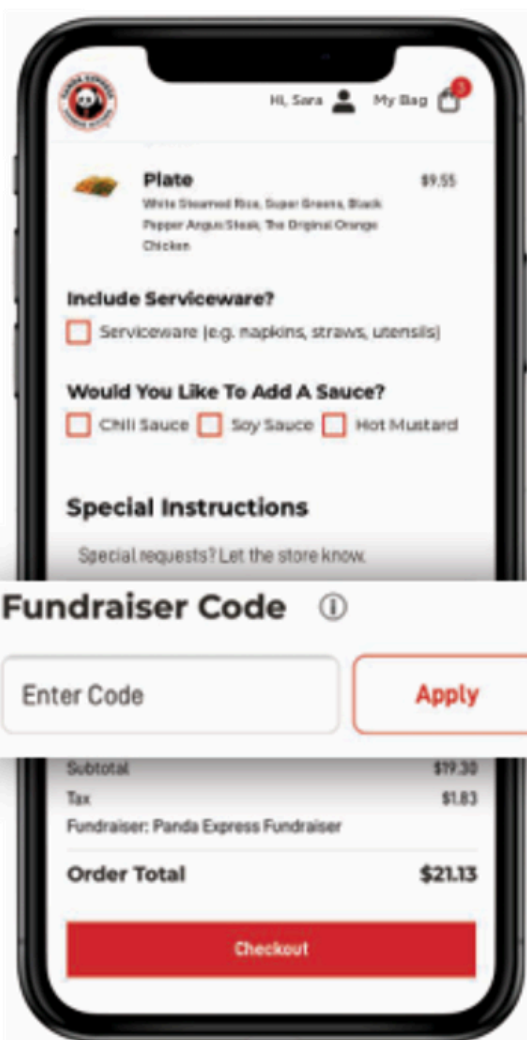




# Ordering Online for Fundraisers



We're excited to feed your supporters and give back to your organization with your upcoming Panda fundraiser! Here are some helpful steps on how your community can order online through [PandaExpress.com](https://PandaExpress.com) or our [Panda Express App](#).



1 Go to [PandaExpress.com](https://PandaExpress.com) to "Order Now" or open our [Panda Express App](#) to "Order".

2 Choose "**Pickup**" and select a pickup restaurant, or choose "**Delivery**" and input your address for options.

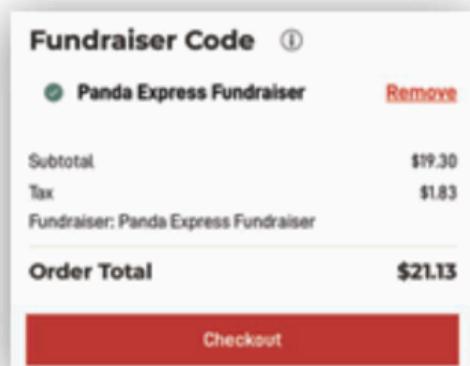
Note: Orders placed through other apps will not count towards your fundraiser.

3 Add all your Panda favorites to your order, like our Original Orange Chicken, Broccoli Beef, and Chow Mein!

4 Input your unique fundraiser Online Ordering Code in the "**Fundraiser Code**" section and click "**Apply**" in the red box.

Note: Fundraiser Code is applicable to your online order for your event date, up to a week ahead of time.

5 Confirm your code has been applied by checking that your organization name is displayed. Click "**Checkout**" and provide payment information.



If you have additional questions, email us at [FundraiserCenter@pandarg.com](mailto:FundraiserCenter@pandarg.com) and our community team will be happy to help!

## Happy Fundraising!



JDI is excited to relaunch the Alumni Association!

## What is Alumni?



As an Alumni member we are looking to help and mentor our Daughters in their future endeavors:

- Moving to a new location and need information?
- Starting a new job and looking for a mentor in that field?
- Need help with interviewing?

Anyway you can be of help to our Daughters!

*Additionally, the JDI bylaws were changed this past year, so if you have signed-up for Alumni in the past, membership now requires annual dues.*



Do you want to be part of the Job's Daughters International Alumni Association?

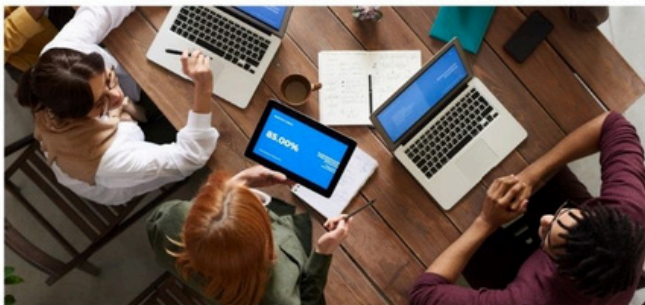
Use the link at the top of the page or [Click Here](#), or look for our table at Supreme Session to register for the Job's Daughters Alumni Association now!

*As a member you will also receive a pin showing your membership in the Alumni Association!*



[Application](#)

## O que é Alumni?



Como membros Alumni nós procuramos ajudar nossas Filhas em seus futuros desafios:

- Se mudando para outra cidade e precisa de informação?
- Começando um novo trabalho ou procurando um mentor nessa área?
- Precisa de ajuda com entrevistas?

De qualquer forma, você pode ajudar as nossas Filhas!

*Além disso, os estatutos da FJI foram alterados no ano passado, portanto, se você já se inscreveu como Alumni no passado, a associação agora exige taxas anuais.*



Você quer fazer parte da Associação Alumni das Filhas de Jó Internaciol?

Use o link no topo da pagina ou [Clique aqui](#), ou vá até a nossa mesa na Suprema Sessão para se inscrever para a Associação Alumni das Filhas de Jó agora!

*Como membro você receberá um pin demonstrando sua associação na Associação Alumni!*



[Inscreva-se](#)

# Job's Daughters International® Legacy Donor Program

***Join Us in Empowering  
the Leaders of Tomorrow!***



Your generous donations to the Legacy Program ensure that JDI can continue to empower young women for generations to come. By contributing, you support leadership development, foster community engagement, enhance educational opportunities.

To show our appreciation, we offer a beautiful JDI Legacy Pin for donations at the following levels:  
\$250, \$500, \$750, \$1,000 and many amounts above these levels for which we add incremental stones.



**Make Your Contribution Today**  
Donating is easy! We accept:  
Cash, Checks (Payable to Job's Daughters International), Venmo at @jobsdaughters, or through Zeffy using this QR code:

